



# ICM

THE EQUIPMENT SPECIALIST



FORESTRY PRODUCTS  
2023





## ENTRY LEVEL LOG GRABS

# SIMPLE, but very useful!

- **Simple design** to minimize the price
- Perfect for those who want a simple yet **effective tool** to handle logs and branches
- 4-hole pattern on the head to fit flanged rotator, and shaft rotator with **bushing adaptor included**



# SERIES BASIC

Suitable for



Truck crane

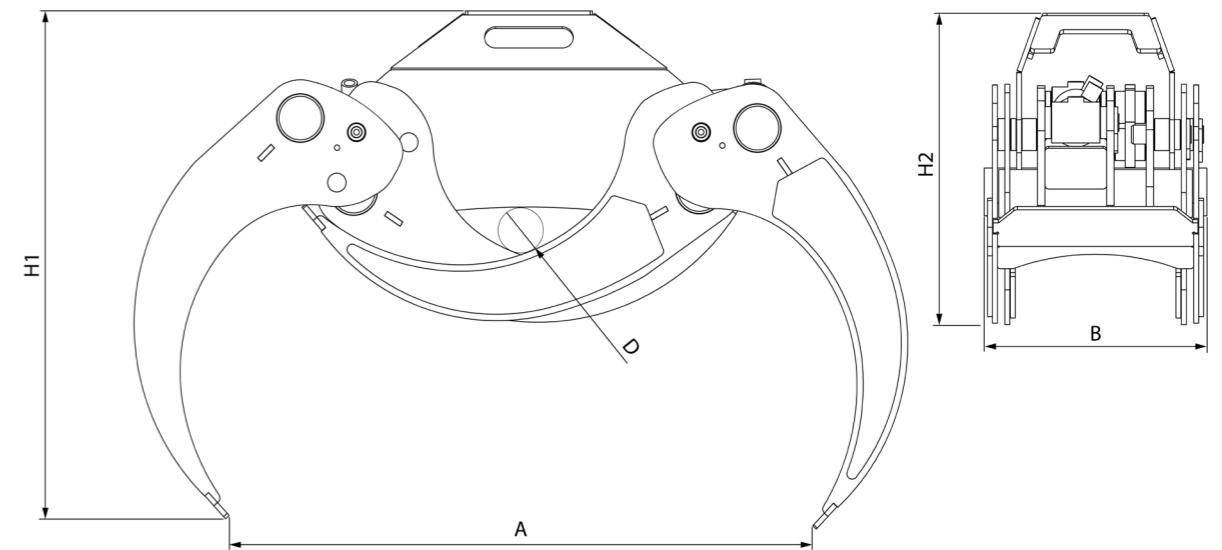


Excavator

## Technical data

Model		BASIC 105	BASIC 130	BASIC 150
Crane	ton/m	2-5	5-7	7-10
Excavator	ton	0,5-2	2-4	4-6
Weight	kg	72	101	156
Area	m <sup>2</sup>	0,16	0,24	0,30
Force	daN	900	1100	1650
Max. load	kg	1000	2000	2650
Max. pressure	bar	250	250	250
A	mm	1035	1285	1505
B	mm	310	355	385
H1	mm	650	728	865
H2	mm	495	570	650
D	mm	75	100	100

## Technical drawings

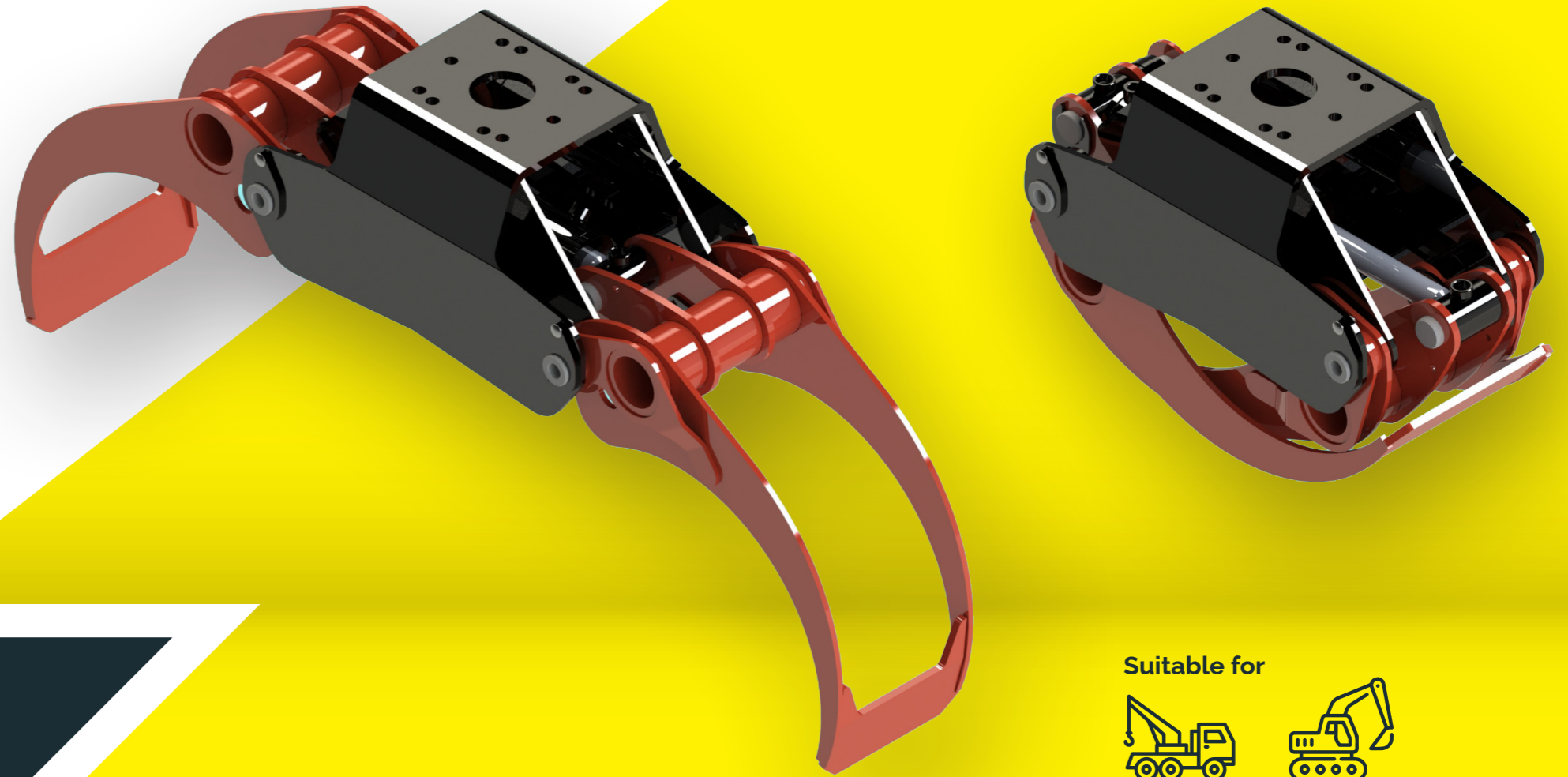


## PROFESSIONAL LIGHT LOG GRABS

# LIGHT, but not weak!

- Bronze bushings in all pin seats for a **perfect lubrication**
- **Strenx700** in the blades for high strength and low weight
- **Light design** to fit on small cranes and excavator
- Central cylinder to grant uniform push

# SERIES GRA-L



Suitable for



Truck crane

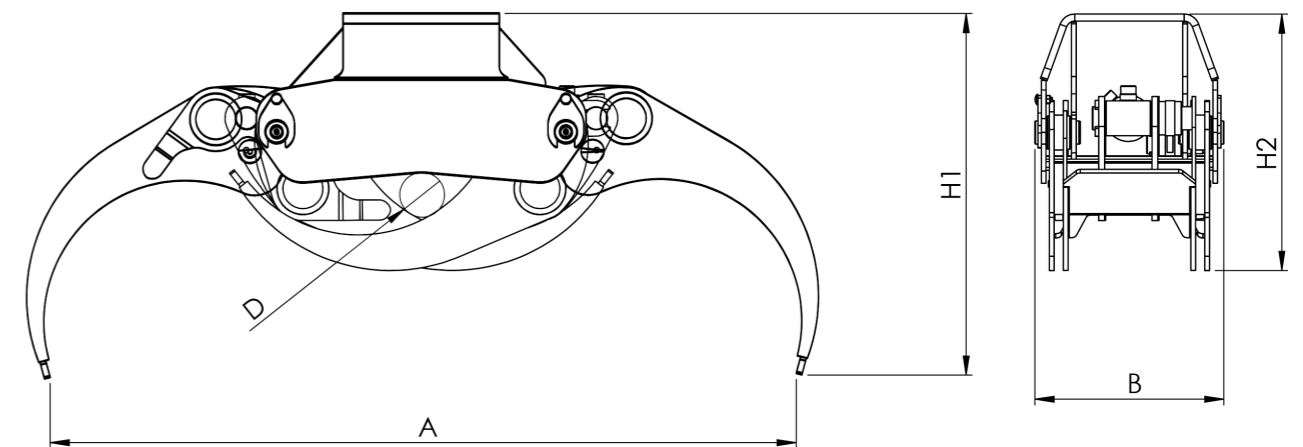


Excavator

## Technical data

Model		GRA-L 16	GRA-L 19	GRA-L 22
Crane	ton/m	2-6	6-8	8-10
Excavator	ton	1,5-3	3-5	5-6
Weight	kg	52	92	109
Area	m <sup>2</sup>	0,16	0,19	0,22
Force	daN	775	1060	1275
Max. load	kg	1000	1800	2500
Max. pressure	bar	250	250	250
A	mm	1100	1300	1400
B	mm	262	326	326
H1	mm	582	625	648
H2	mm	385	444	498
D	mm	57	77	118

## Technical drawings

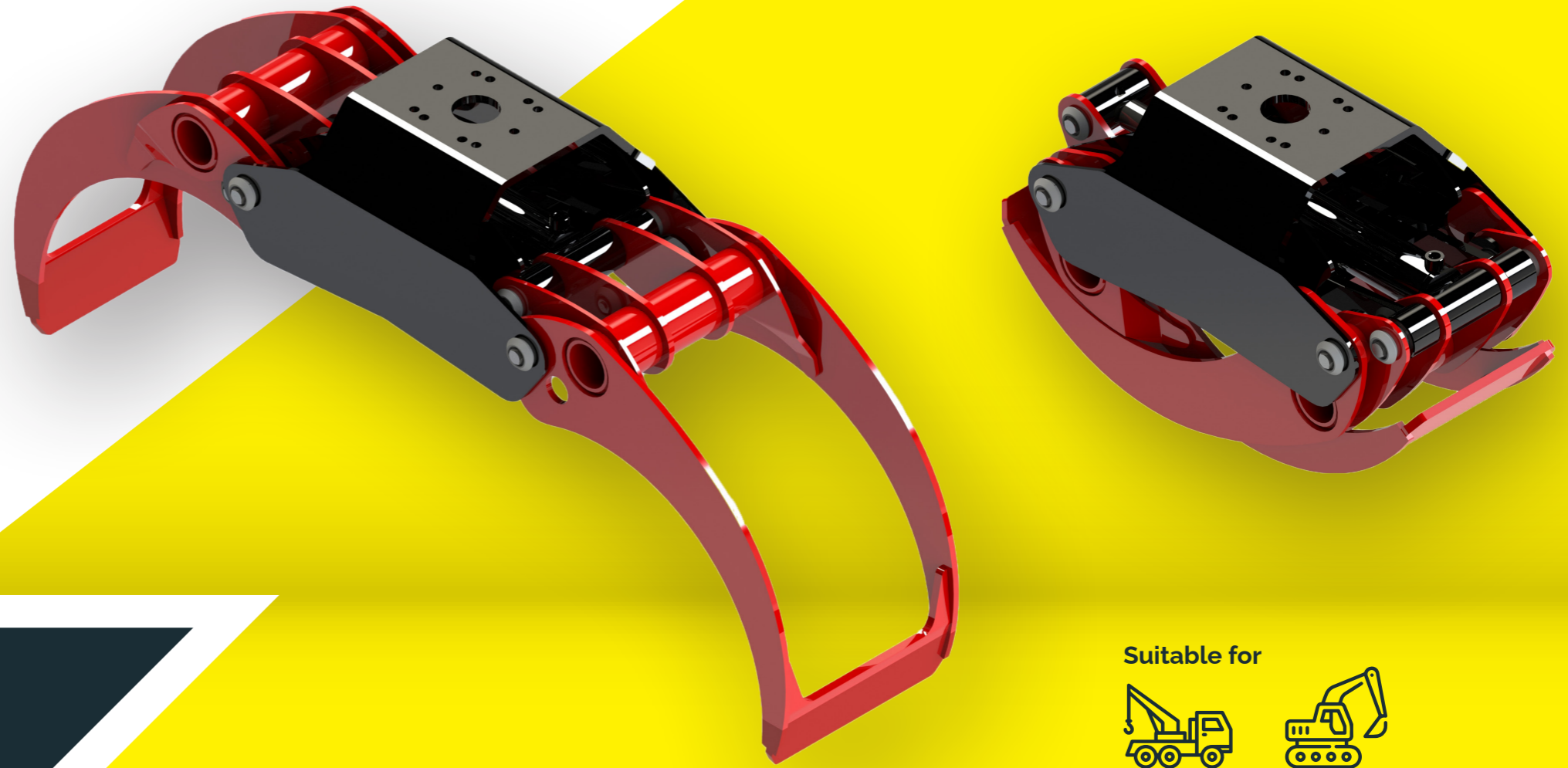


## PROFESSIONAL LOG GRABS

# STRENGTH, without effort!

- Bronze bushings in all pin seats for a **perfect lubrication**
- **Strenx700** with high strength and low weight
- **Double spacing rod** and central cylinder to grant uniform push
- Reinforced head for **intensive use**

# SERIES GRA-M



Suitable for



Truck crane

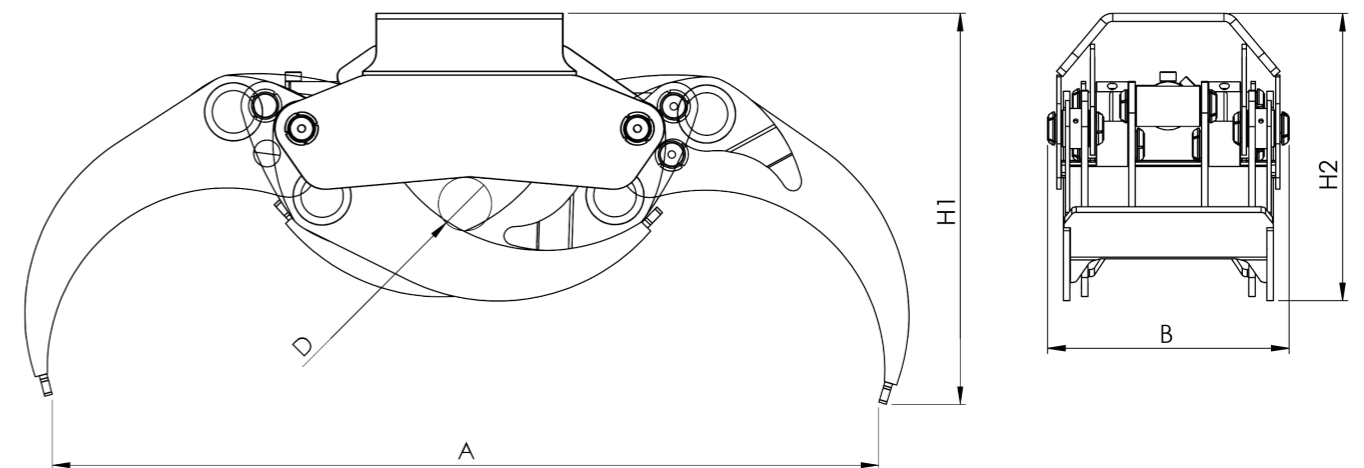


Excavator

## Technical data

Model		GRA-M 26	GRA-M 30	GRA-M 36	GRA-M 42	GRA-M 52
Crane	ton/m	10-12	12-15	15-18	18-20	20-25
Excavator	ton	6-7	7-9	9-12	12-15	15-18
Weight	kg	195	200	295	328	370
Area	m <sup>2</sup>	0,26	0,30	0,36	0,42	0,52
Force	daN	1640	1450	2110	2405	2235
Max. load	kg	3000	4000	5000	5000	7000
Max. pressure	bar	250	250	250	250	250
A	mm	1550	1700	1870	2060	2110
B	mm	450	450	520	520	520
H1	mm	760	805	820	880	900
H2	mm	540	525	585	665	680
D	mm	100	70	145	170	160

## Technical drawings



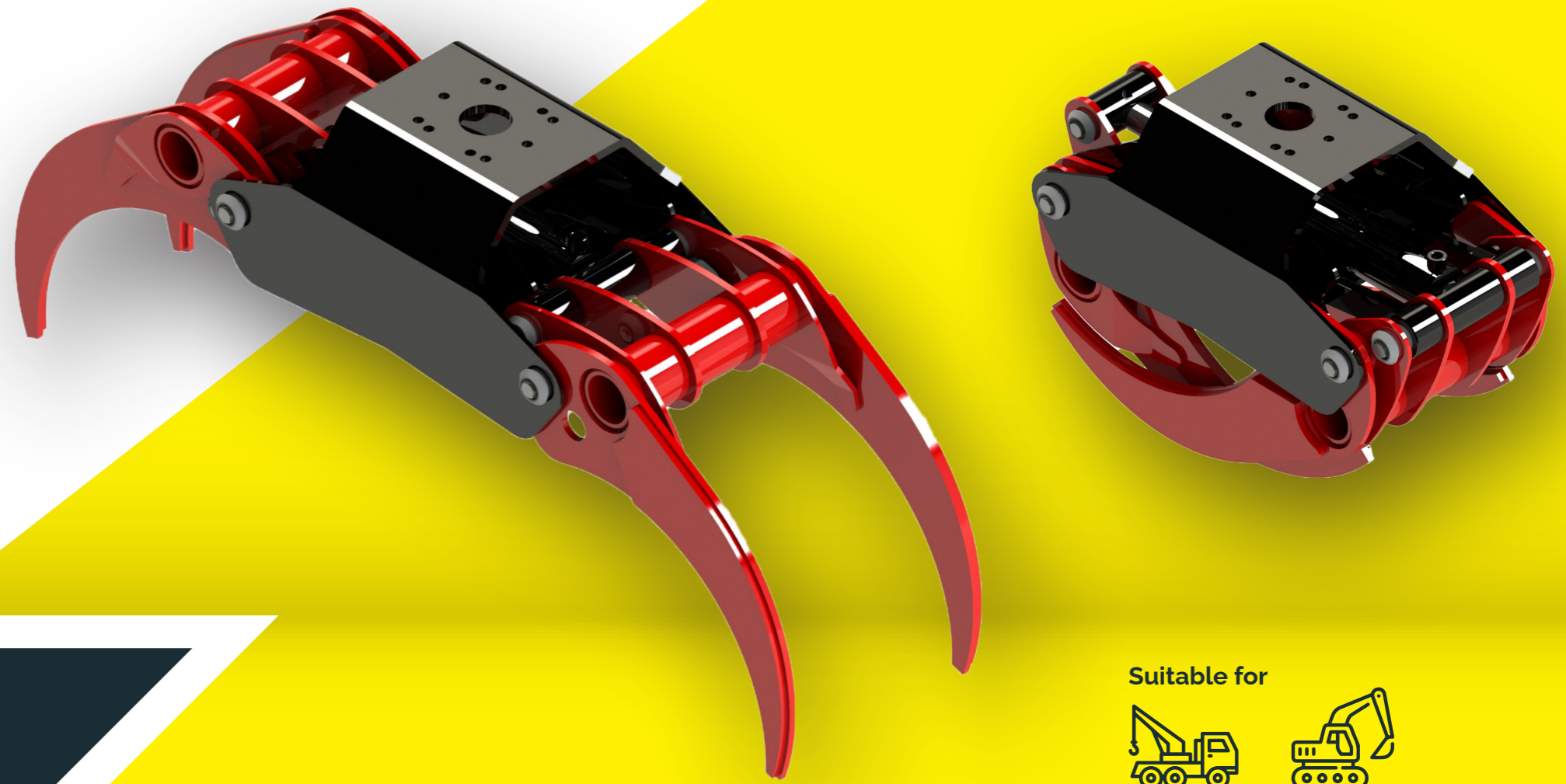


## PROFESSIONAL ENERGY GRABS

# POWER, in the forest!

- Bronze bushings in all pin seats for a **perfect lubrication**
- **Strenx700** with high strength and low weight
- **Double spacing rod** and central cylinder to grand uniform push
- Reinforced head for **intensive use**
- Open **reinforced teeth** for intensive forest works

# SERIES GRA-R



Suitable for



Truck crane

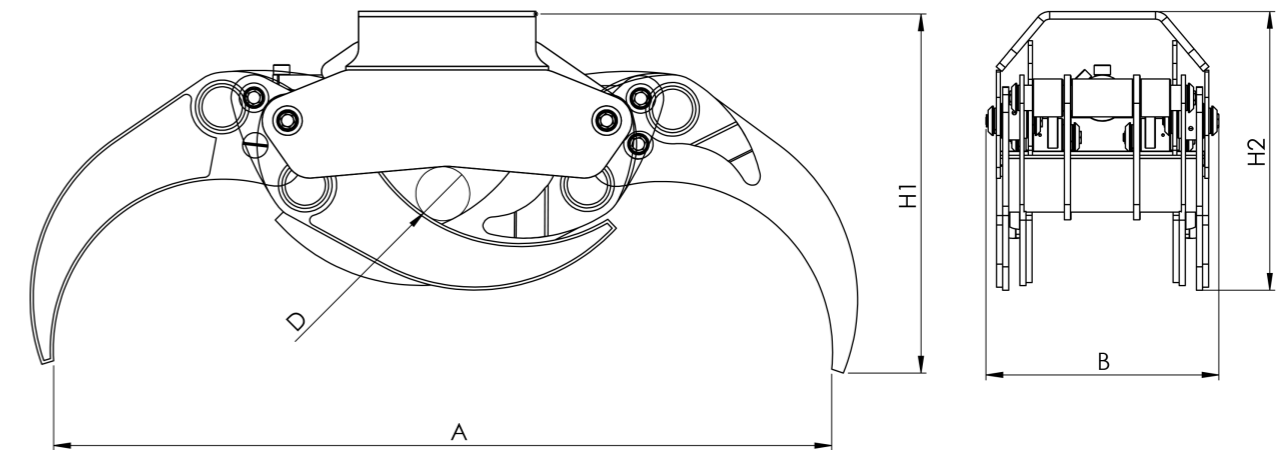


Excavator

## Technical data

Model		GRA-R 22	GRA-R 26	GRA-R 36	GRA-R 42
Crane	ton/m	8-10	10-12	15-18	18-20
Excavator	ton	5-6	6-7	9-12	12-15
Weight	kg	121	215	320	350
Area	m <sup>2</sup>	0,22	0,26	0,36	0,42
Force	daN	1275	1640	2110	2405
Max. load	kg	2500	3000	5000	5000
Max. pressure	bar	250	250	250	250
A	mm	1400	1550	1870	2060
B	mm	326	450	520	520
H1	mm	648	760	820	880
H2	mm	498	540	585	665
D	mm	118	100	145	170

## Technical drawings

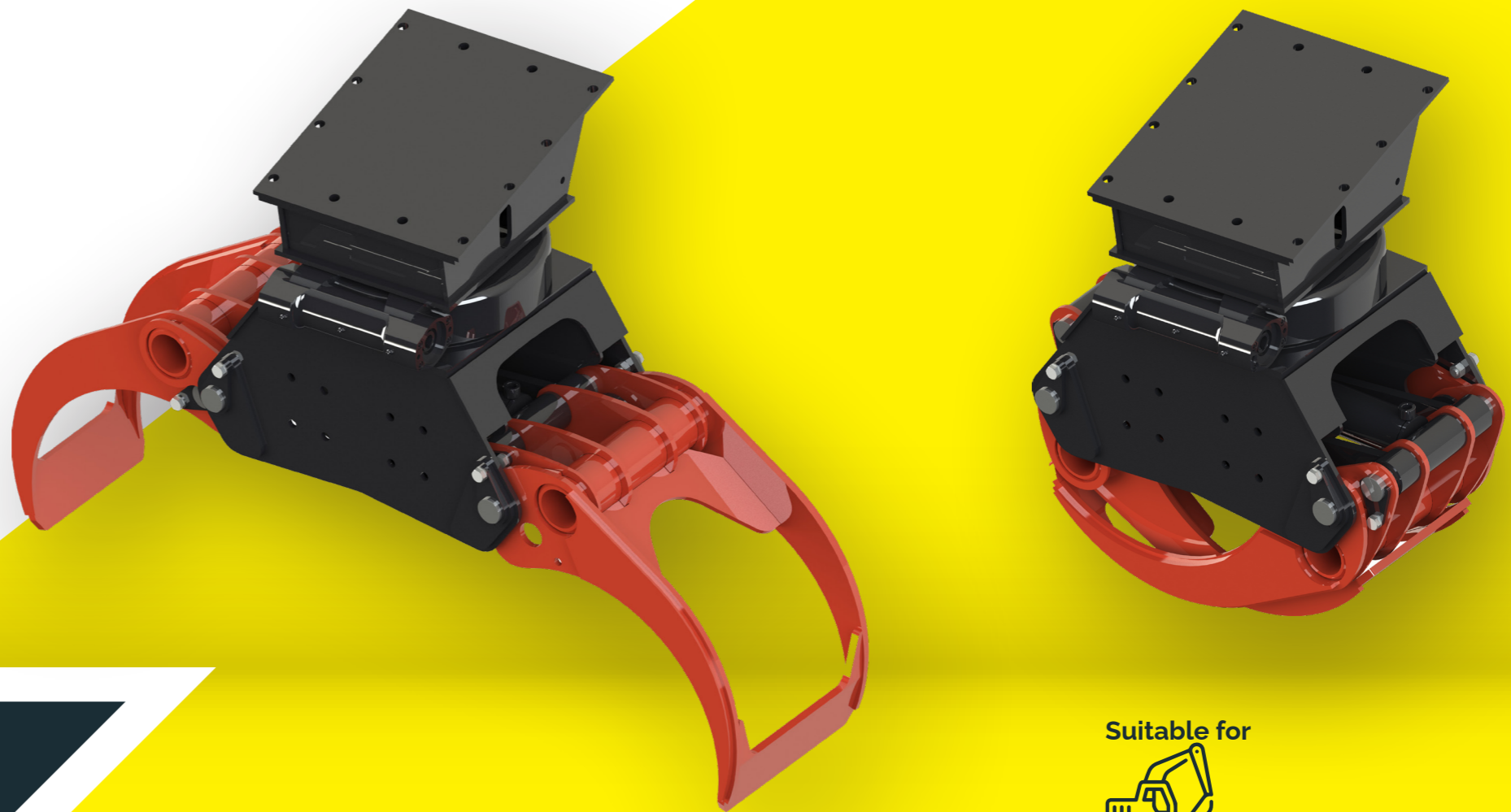




## PROFESSIONAL LOG GRABS FOR EXCAVATORS

# SUPERPOWERS, in your hands!

- Bronze bushings in all pin seats for a **perfect lubrication**
- **Strenx700** with high strength and low weight
- **Double spacing rod** and central cylinder to grand uniform push
- Reinforced head for **intensive use**
- **Slew ring rotation included**

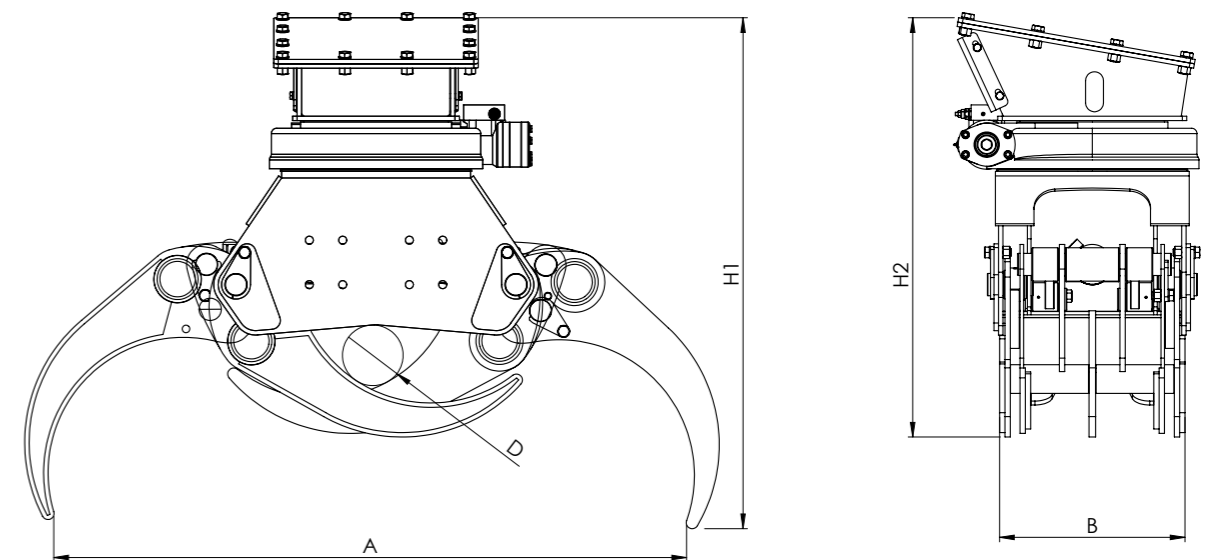


# SERIES GRA-E

## Technical data

Model		GRA-E 16R	GRA-E 22R	GRA-E 26	GRA-E 42
Excavator	ton	1-2	2-5	8-12	12-20
Weight	kg	110	230	426	630
Area	m <sup>2</sup>	0,16	0,22	0,26	0,42
Force	daN	800	1275	1700	2300
Max. load	kg	1000	2500	3000	5000
Max. pressure	bar	250	250	250	250
A	mm	1098	1394	1555	2040
B	mm	288	346	417	467
H1	mm	797	914	1085	1254
H2	mm	588	770	933	1073
D	mm	58	120	136	154

## Technical drawings

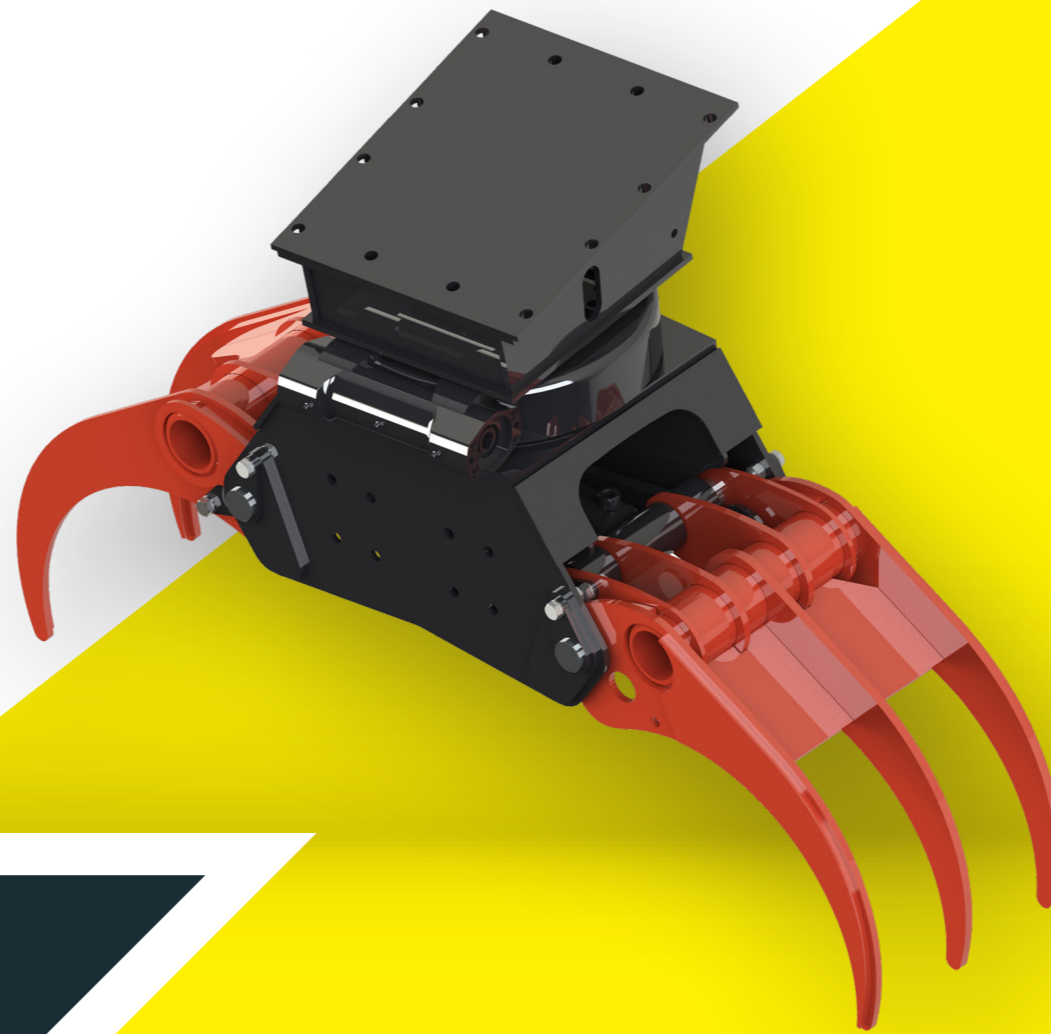




## PROFESSIONAL ENERGY GRABS FOR EXCAVATORS

# SUPERPOWERS, in the forest!

- Bronze bushings in all pin seats for a **perfect lubrication**
- **Strenx700** with high strength and low weight
- **Double spacing rod** and central cylinder to grand uniform push
- Reinforced head and teeth for **intensive use**
- **Slew ring rotation included**



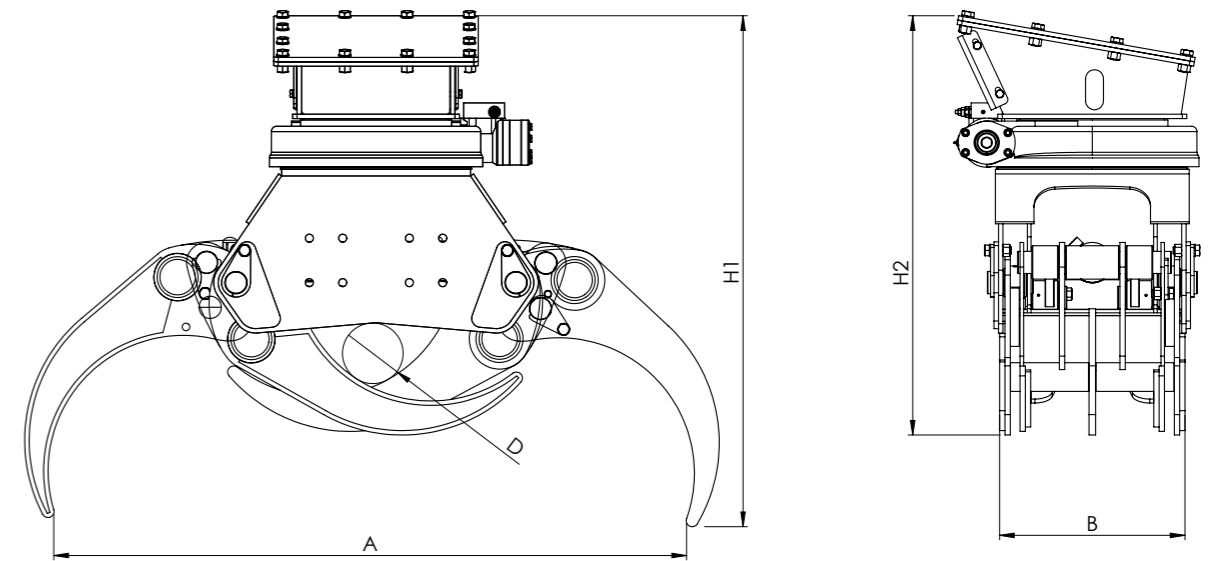
# SERIES GRA-ER



## Technical data

Model		GRA-ER 16R	GRA-ER 22R	GRA-ER 26	GRA-ER 42
Excavator	ton	1-2	2-5	8-12	12-20
Weight	kg	162	238	430	726
Area	m <sup>2</sup>	0,16	0,22	0,26	0,42
Force	daN	800	1275	1700	2300
Max. load	kg	1000	2500	3000	5000
Max. pressure	bar	250	250	250	250
A	mm	1100	1398	1581	2077
B	mm	288	343	417	467
H1	mm	770	896	1046	1214
H2	mm	590	770	943	1073
D	mm	58	120	136	154

## Technical drawings

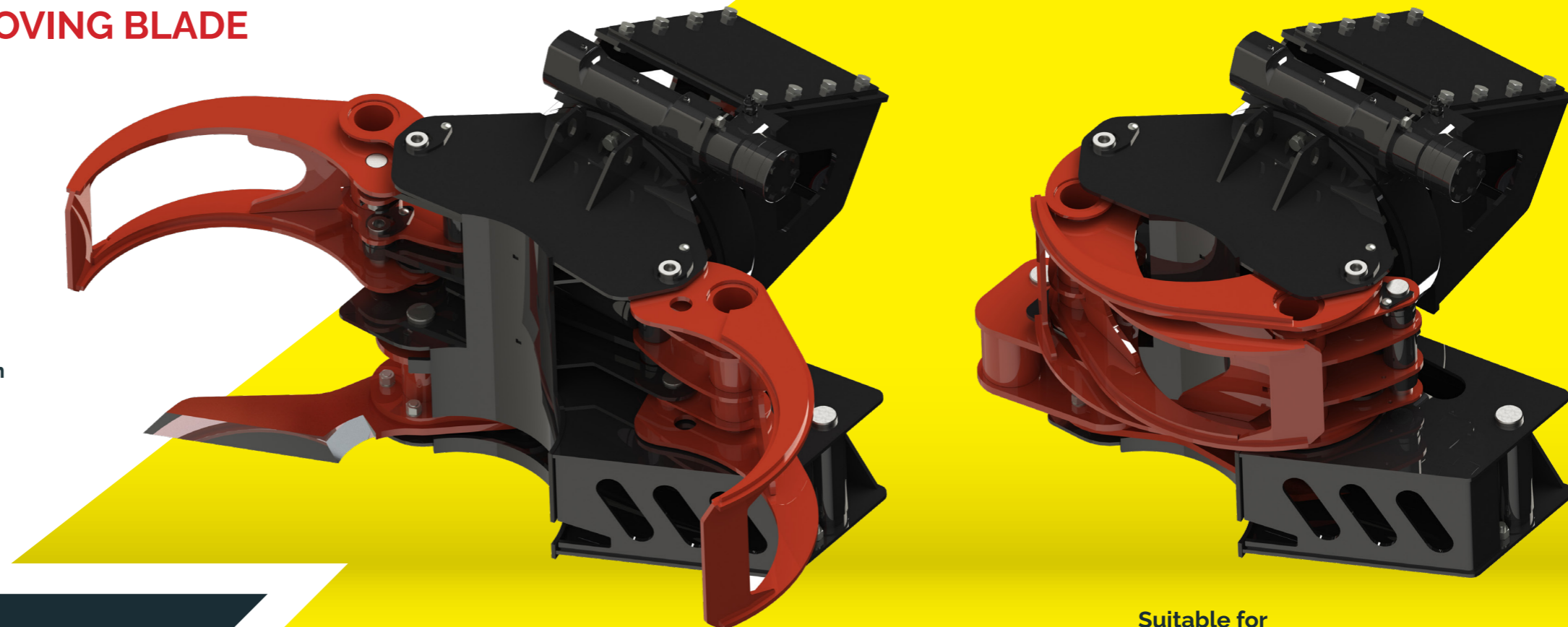




## PROFESSIONAL SHEAR WITH MOVING BLADE

# SHARP BLADE, for a quick cut!

- Rigid configuration to have **total control of the inclination** with which the wood is grasped
- **Hardox400** blade for extra durability
- **Plate for quick coupling** included
- **Slew ring rotation** included



# SERIES GRA-B

Suitable for

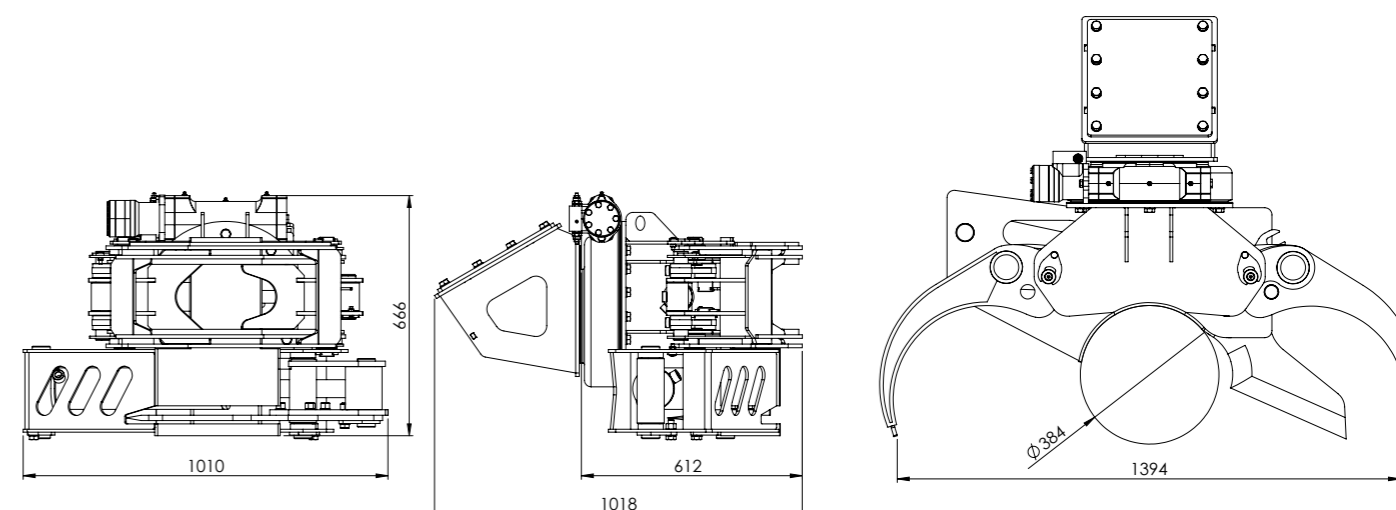


Excavator

## Technical data

Model	GRA-B 35	
Excavator	ton	4-10
Weight	kg	439
Area	m <sup>2</sup>	0,22
Max. load	kg	2500
Max. pressure	bar	250
Closing force	daN	1275
Cutting force	daN	20300
Max. Ø cut	mm	350

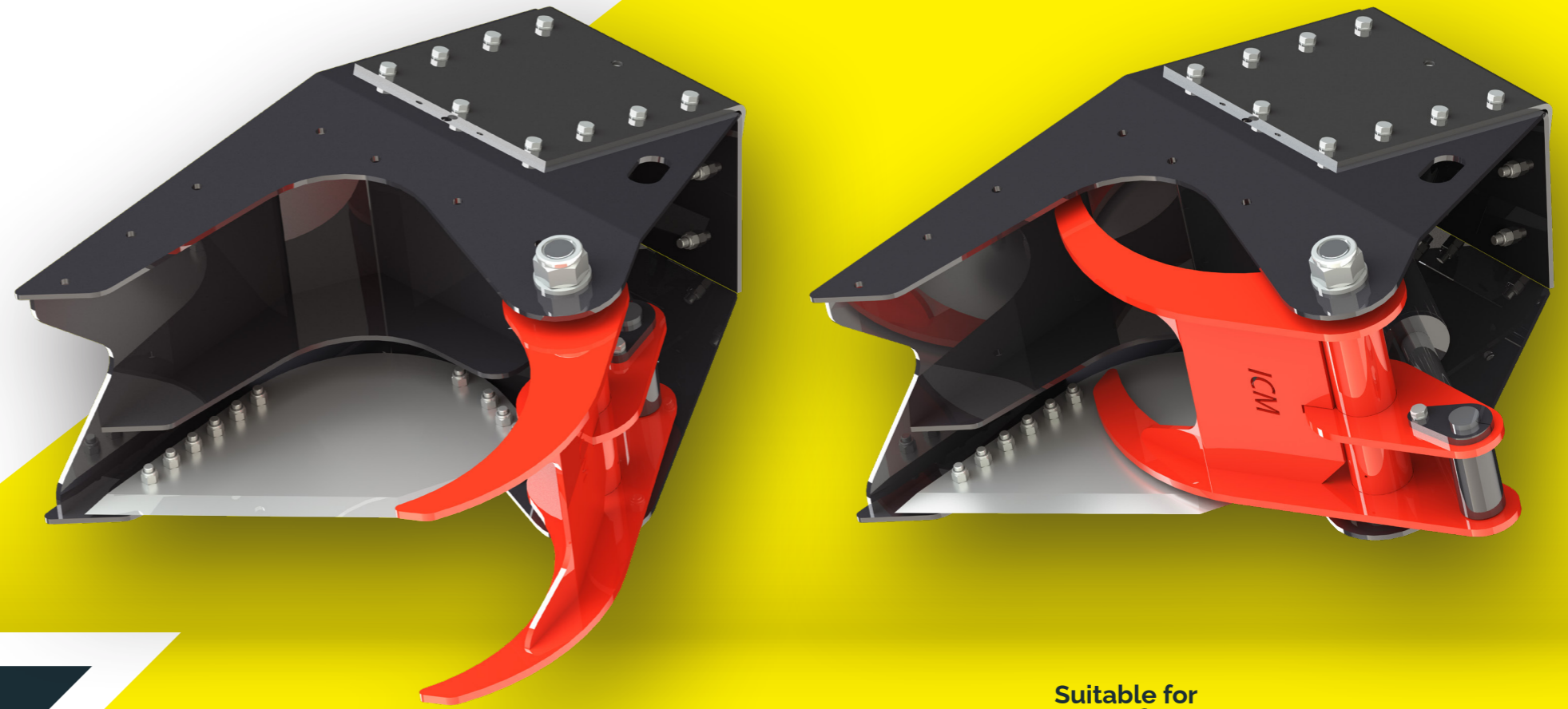
## Technical drawings



## PROFESSIONAL TREE SHEARS

# CUTTING is my middle name!

- Designed to work with high pressures which grant **strength and speed to cut**
- **Hardox400** blade for extra durability
- **Plate for quick coupling** included
- Optional rotation with slew ring



## SERIES GRA-C

Suitable for

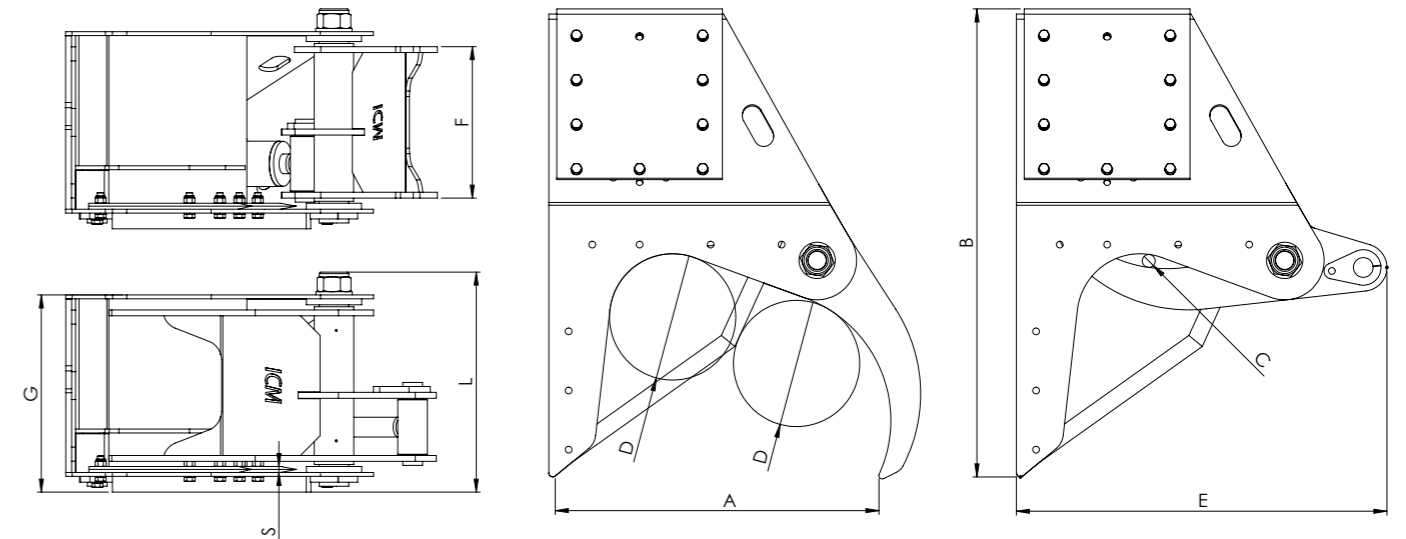


Excavator

### Technical data

Model		GRA-C 20	GRA-C 30	GRA-C 45
Excavator	ton	2-6	5-15	15-30
Weight	kg	114	292	853
Force	daN	8800	18250	27000
Req. oil flow	lt/min	35	60	120
Max. pressure	bar	250	300	300
A	mm	613	810	1245
B	mm	822	1186	1743
C	mm	13	33	74
D	mm	227	335	504
E	mm	638	939	1479
F	mm	184	354	484
G	mm	390	500	630
L	mm	421	558	700
S	mm	10	15	20

### Technical drawings



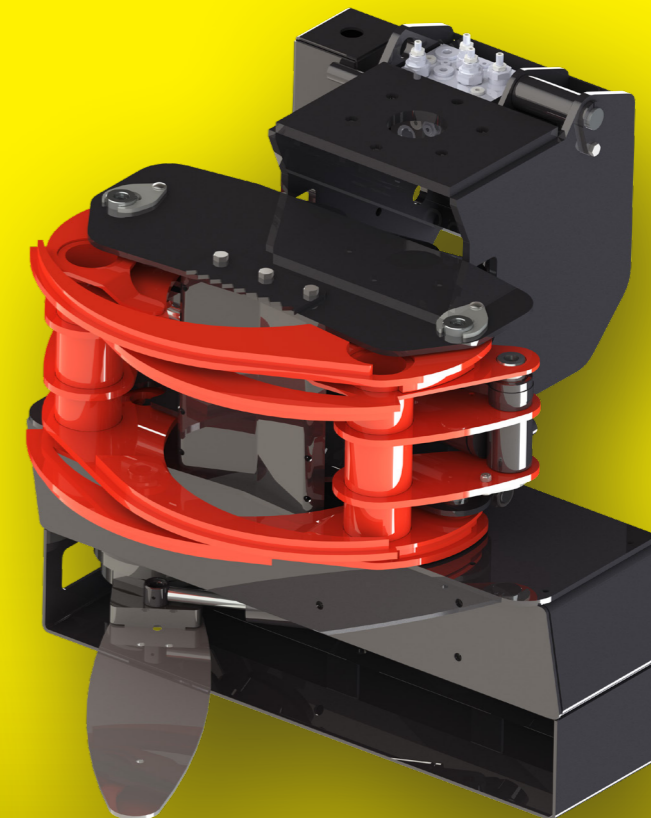
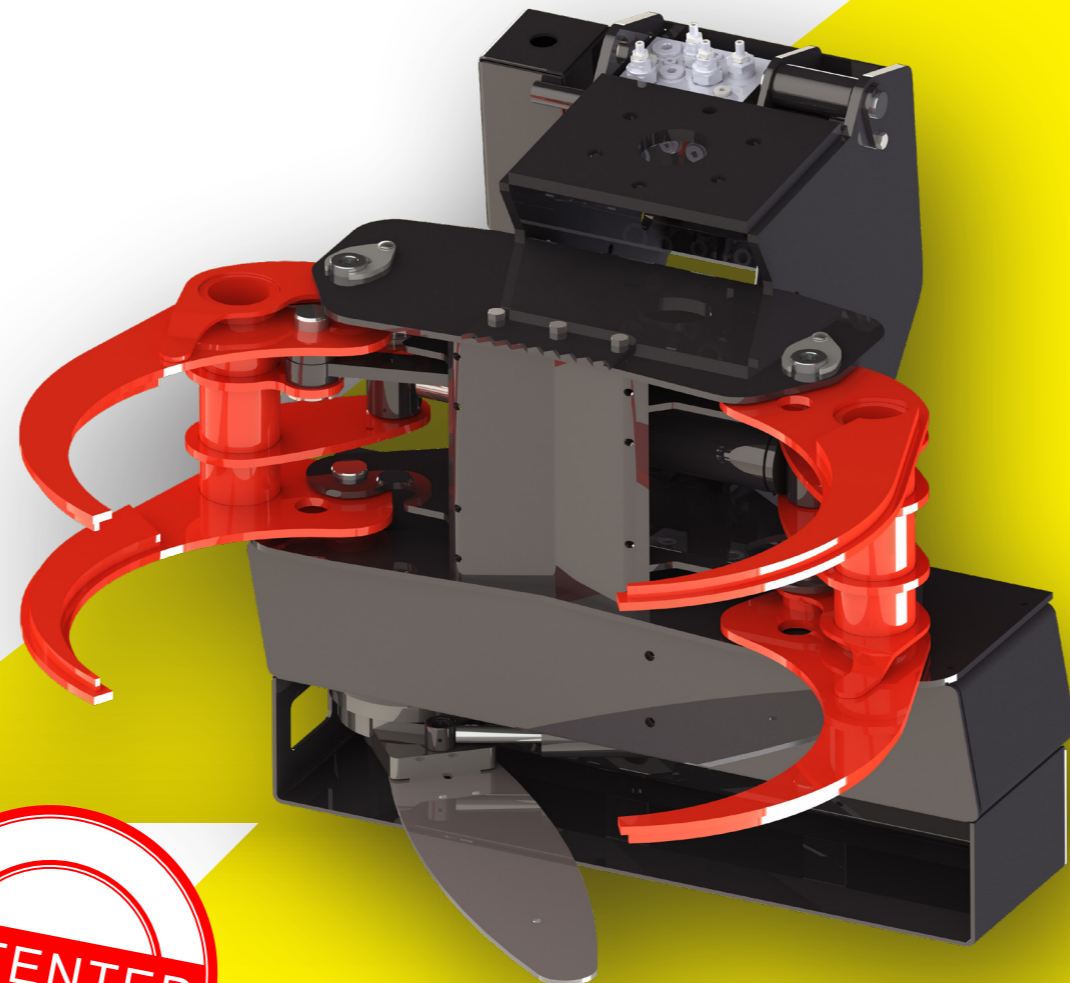


## PROFESSIONAL FELLING GRAPPLES

# TREE FELLING, made easy!

- **Lightweight** optimized for use on truck cranes and trailers
- **Sequential hydraulic system** - only two circuits necessary
- Saw components **made in Sweden**
- Tilting and saw settings are **fully adjustable**
- **No electronics**

# SERIES GRA-F



Suitable for



Truck crane

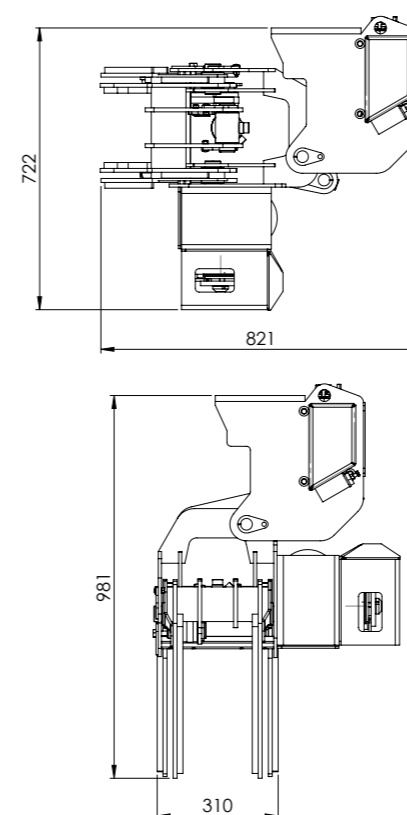
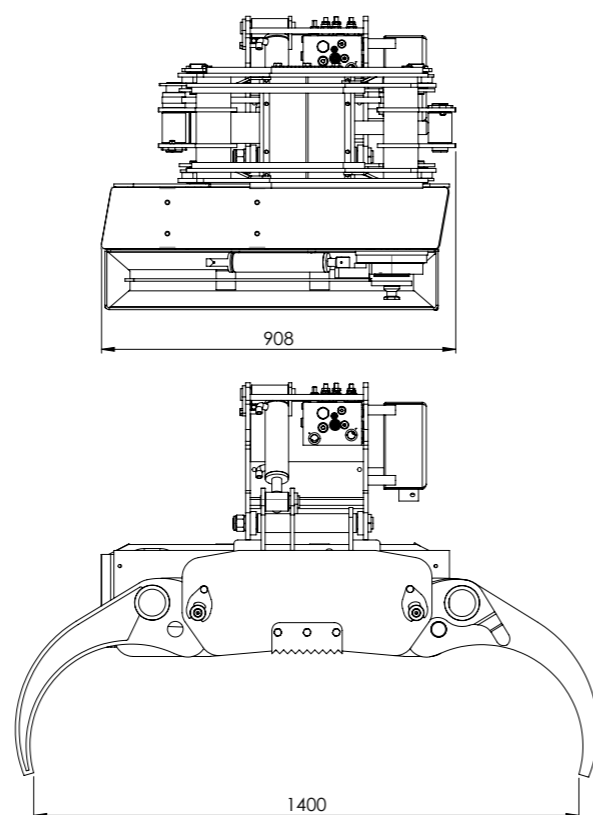


Excavator

## Technical data

Model	GRA-F 500	
Crane	ton/m	20-60
Excavator	ton	8-12
Weight	kg	293
Force	daN	1275
Area	m <sup>2</sup>	0,22
Req. oil flow	lt/min	50-100
Max. pressure	bar	250
Max. Ø cut	mm	500
Blade length	mm	600

## Technical drawings



## Gallery

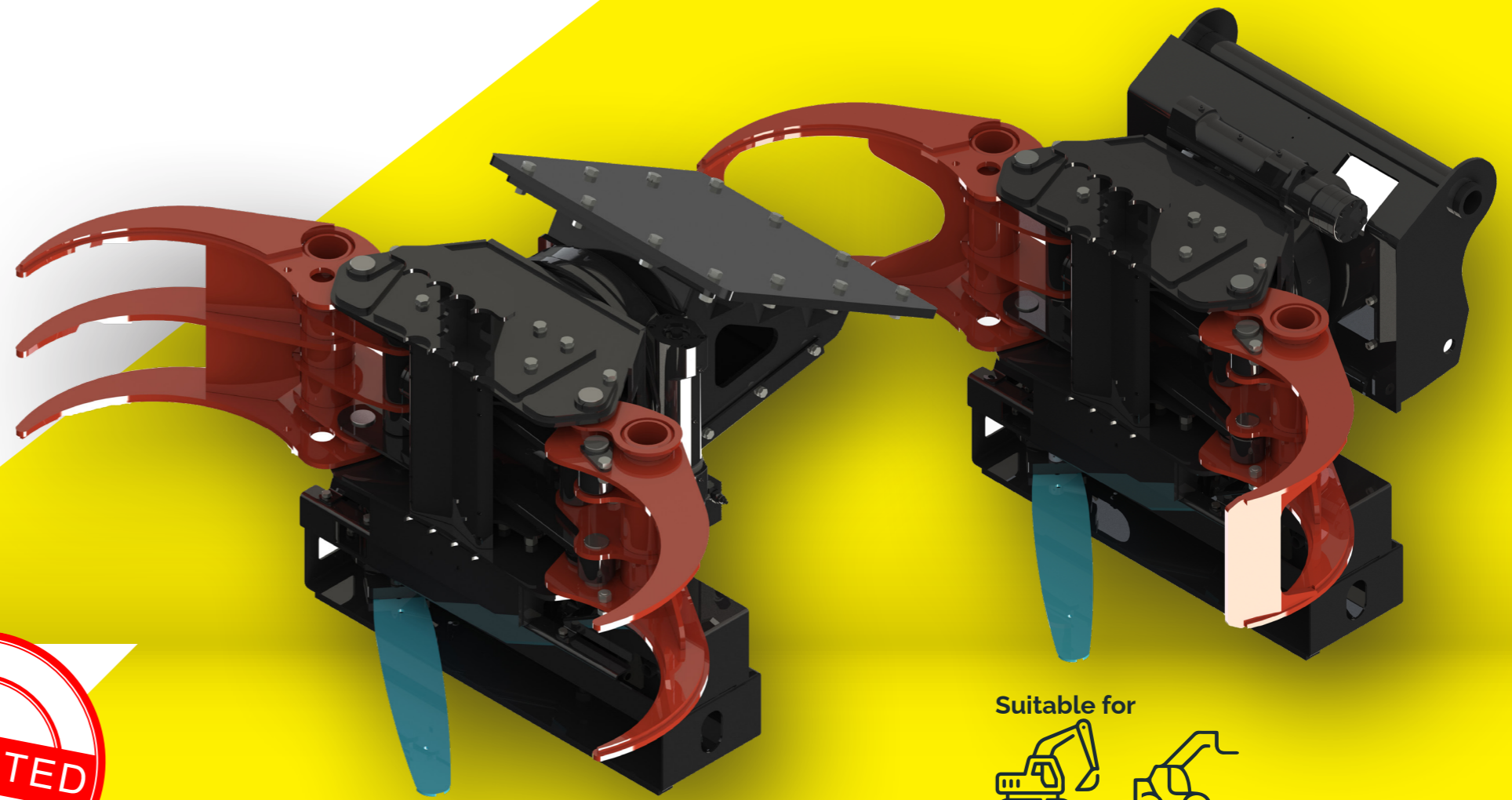




## PROFESSIONAL FIXED FELLING GRAPPLES

# Power is nothing, WITHOUT CONTROL!

- Rigid configuration to have **total control of the inclination** with which the wood is grasped
- Saw components **made in Sweden**
- **Reinforced structure**, optimized for rigid installation on excavator and telehandler
- **Spring operated safety system** to prevent the bar from getting stuck during the cut



## SERIES FMS



Suitable for



Excavator

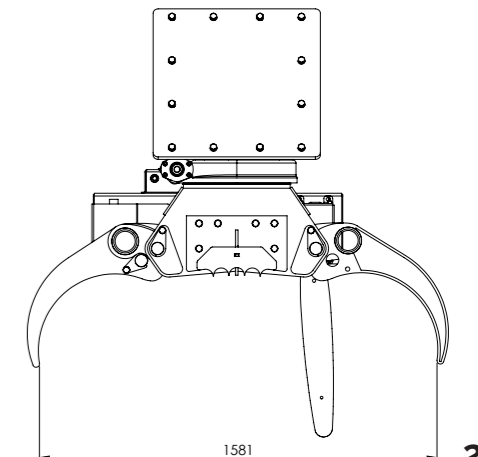
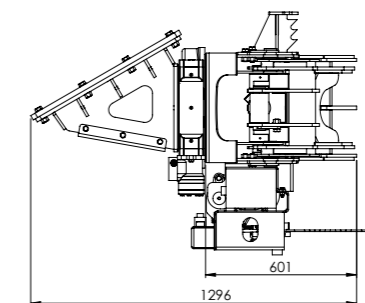
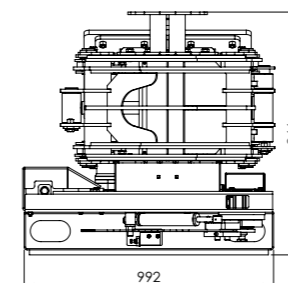
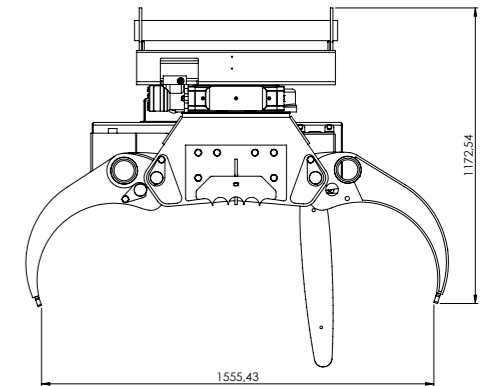
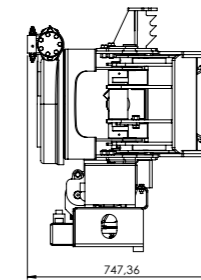
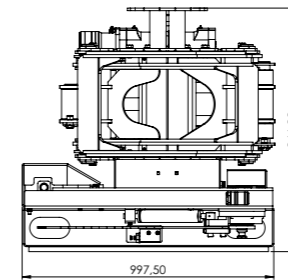


Telehandler

### Technical data

Model		FMS 500	FMS 600	FMS 750
Telehandler	ton	13-24	-	-
Excavator	ton	-	10-15	13-20
Weight	kg	570	575	920
Area	m <sup>2</sup>	0,26	0,26	0,42
Force	daN	1700	1700	2300
Max. load	kg	3000	3000	5000
Max. pressure	bar	250	250	250
Req. oil flow	lt/min	40-80	60-100	100-150
Max. Ø cut	mm	500	600	750

### Technical drawings





## PROFESSIONAL LOG GRABS WITH HYDRAULIC CHAINSAW

# All you need is... SAW!

- Complete grapple saw kit, **ready to work**
- Saw components **made in Sweden**
- Operated by three hydraulic circuits via **6-port rotator**
- Manually adjustable **automatic chain lubrication system**

## SERIES MS KIT



Suitable for



Truck crane

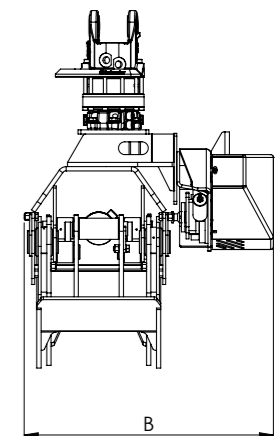
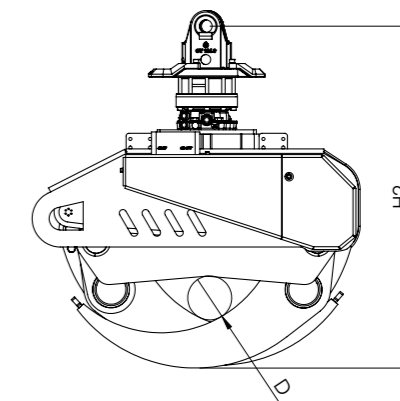
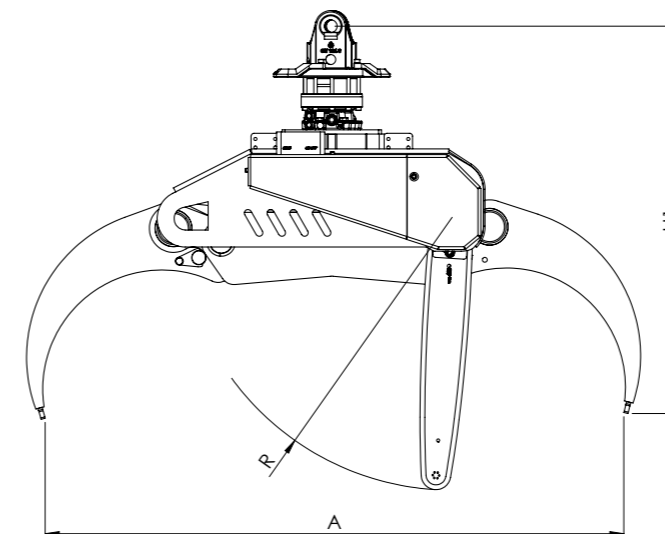


Excavator

### Technical data

Model		MS400 kit	MS500 kit	MS750 kit
Excavator	ton	4-6	6-10	10-18
Log grab incl.	model	GRA-L 22	GRA-M 26	GRA-M 42
Rotator incl.	model	5ton	12ton	12ton
Weight	kg	233	355	533
Area	m <sup>2</sup>	0,22	0,26	0,42
Max. pressure	bar	250	250	250
Req. oil flow	lt/min	40-60	60-100	90-150
Max. Ø cut (R)	mm	400	500	750
Chain tensioning	type	manual	manual	manual
A	mm	1400	1550	2060
B	mm	649	711	879
H1	mm	1015	1237	1386
H2	mm	861	1040	1202
D	mm	118	100	170

### Technical drawings

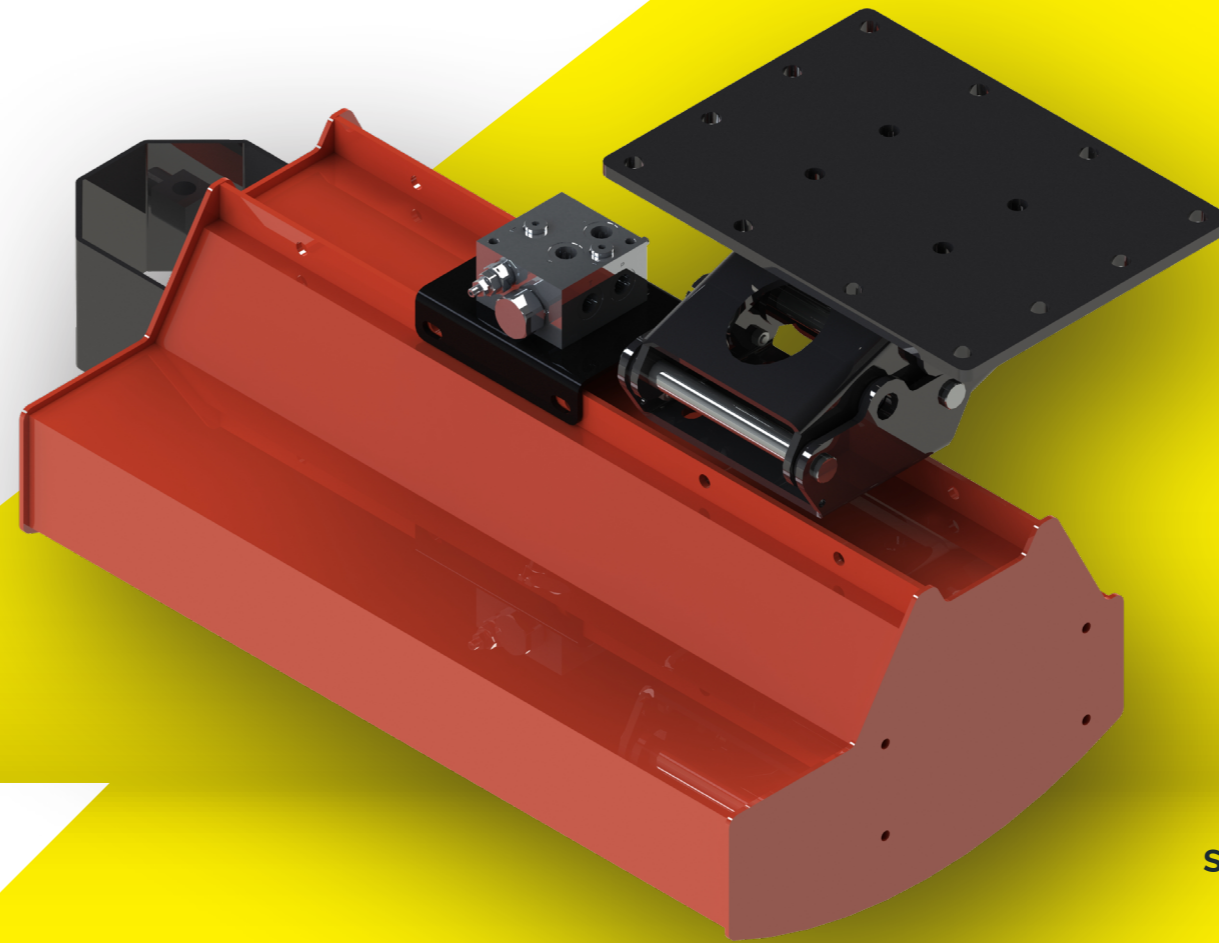


## MULCHING HEADS

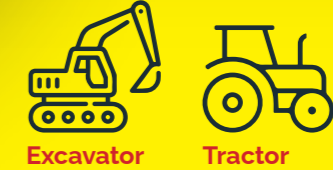
# CLEAR IT, quick & easy!

- Motor speed **3000rpm** to effectively shred bushes and shrub
- Motor with **no drainage**
- **Plate for quick coupling** included
- Easily **replaceable knives**

## SERIES MUL



Suitable for



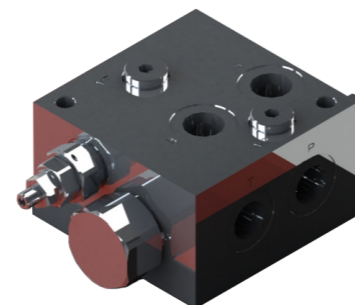
### Technical data

Model		MUL 308	MUL 608
Excavator	ton	1-3	3-6
Weight	kg	86	145
Ø rotor	mm	110	125
Rotor speed	rpm	3000	3000
Displacement	cc	10	25
Max. pressure	bar	200	250
Max. oil flow	lt/min	30	75
Max. cut length	mm	800	1150
A	mm	1025	1530
B	mm	462	680
C	mm	304	450

### Accessories

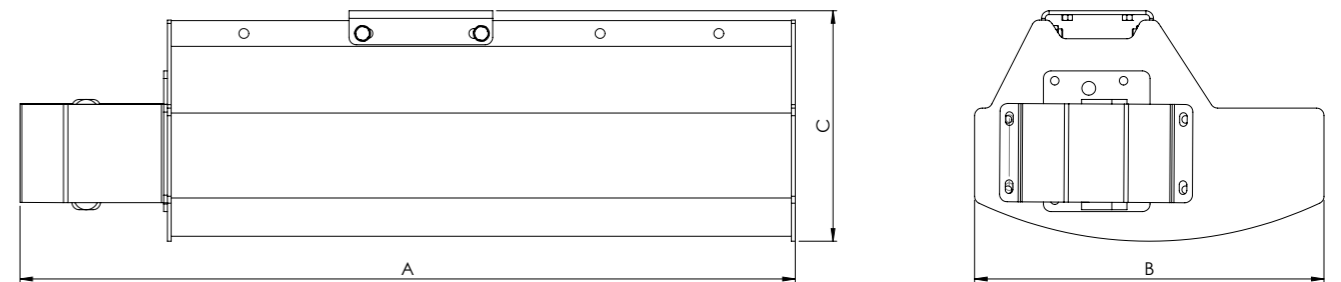


Attacco oscillante bloccabile



Valvola antiurto e anticavitazione

### Technical drawings





## HYDRAULIC ROTATORS

# THE BEST WAY to rotate your equipment!

- **Indexator** high quality rotators
- **4-ports** and **6-ports** versions (perfect for chainsaw application)
- **Shaft rotators** available on request



# HYDRAULIC ROTATORS

### 4-ports rotators

Model		GV 6	GV 12	GV 17S
Weight	kg	45	55	64
Max. static load	kN	60	100	160
Max. dynamic load	kN	25	50	50
Torque at 200bar	Nm	1400	2200	3300
Max. working pressure	bar	200	250	250
Max. open working pressure	bar	200	300	300
Max. close working pressure	bar	300	300	300
Max. oil flow	lt/min	25	25	35

### 6-ports rotators

Model		GV 124S
Weight	kg	66
Max. static load	kN	100
Max. dynamic load	kN	50
Torque at 200bar	Nm	2200
Max. working pressure	bar	250
Max. open working pressure	bar	200
Max. close working pressure	bar	300
Max. Extra function 1 working pressure	bar	300
Max. Extra function 2 working pressure	bar	300
Max. oil flow	lt/min	25



**I.C.M. S.r.l.** unipersonale

Via Fratelli Lumière, 15  
48124 Fornace Zarattini (RA) - Italy  
Tel. +39 0544 453357  
info@icmequipments.com  
www.icmequipments.com

